



FILTREX S.r.l

Automatic backwash filtration

FILTREX | AUTOMATIC BACKWASH FILTRATION

INTRODUCTION

COMPANY

Filtrex has been **founded in 1976** in Milan (IT) and since then has grown up to more than 200 employees working through 3200m² of offices and 42000m² of workshop.

Thanks to a **turnover of 85mil€**, Filtrex invests significantly every year in R&D to provide everyday a leading edge product in filtration technology.

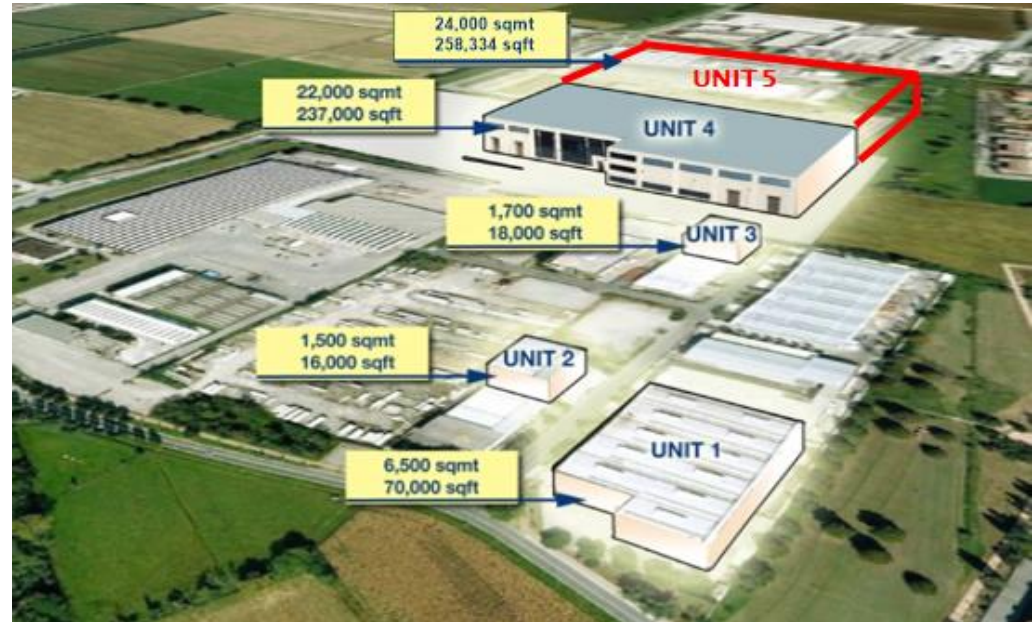
Although having representative offices all over the world (Korea, Japan, Venezuela, India, USA and China), Filtrex is still a **100% Italian owned company**.



THE WORKSHOP PLANT

Divided in **four units** (soon five), Filtrex workshop can operate on different projects at the same time without making them interfere with each others.

- UNIT 1 – Special projects (1984)
- UNIT 2 – (1992)
- UNIT 3 – (2008)
- UNIT 4 – Main workshop and warehouse (2009)
- UNIT 5 – Work in progress (2021)



THE WORKSHOP

Making use of both qualified personell and modern CNC machines, the workshop can achieve an **highly automated production system**.

This combination puts into relation the high quality of machines with the punctual quality control provided by the "human factor", to guarantee the best possible products.



Filtrex is certified by



THE R&D-TESTING FACILITIES

During time Filtrex has developed a wide R&D section with 3 separate pilot test plants for fluid and filter performance analysis:

- **Lube Oil up to 1200 m³/h (5280 GPM)**

Pmax: 7 bar (100psig)

Tmax: 60 °C (392 °F)

- **Water up to 4200 m³/h (18500 GPM)**

Pmax: 6 bar (87psig)

Tmax: 30 °C (86 °F)

- **Fuel Oil up to 30 m³/h (132 GPM)**

Pmax: 10 bar (145 psig)

Tmax: 200 °C (482 °F)



THE WAREHOUSE

Thanks to a separate space of **28,700 m³**, Filtrex can reply in short time to spare parts request, most of which immediately available to the Company warehouse.



FILTREX | AUTOMATIC BACKWASH FILTRATION

PRODUCTION RANGE

FILTREX WORLDWIDE MARKETS

Since its foundation, Filtrex has been active on a wide selection of **markets**:

- Diesel engines & **Marine**
- **Oil&Gas** / Refinery
- **Offshore**
- Industrial
- **Water** Treatment



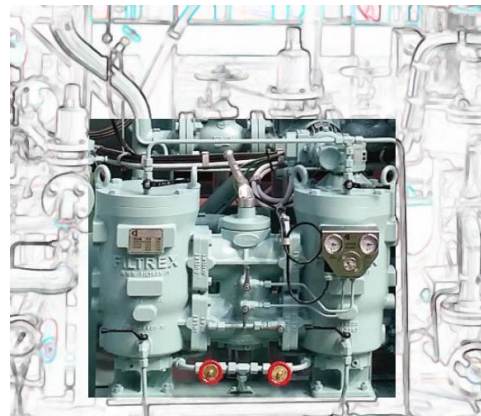
MARINE

- Shipbuilding & Shipping Companies
- Military Applications on Navy vessels
- Propulsion Diesel Engines (M/E) Manufacturers
- Auxiliary Diesel Engines (A/E) Manufacturers
- H.F.O. Booster Modules Manufacturers
- Power Generation Plants
- Ballast water treatment system providers
- Scrubbers providers
- RO systems

Lube Oil
ACP & ACX Type



Fuel Oil
DACT Type



Water/Sea Water
ACB Type



REFINERY & OFFSHORE

ACR

Filtrex proprietary technology



ACW

Filtrex vision of traditional technology



ACB

Filtrex proprietary technology



INDUSTRIAL



SACIL



AC



STATIC



LAMELLAR

A FILTREX PRESENTATION